



Smile With Food!

Connecting smiles with food changing dreams into reality
We will continue to challenge



Business Contents

We appreciate all the support
we received from everyone.

We make effort to be aware of the needs of our customer.
Our aim is strengthening a reliable network
and building a consistent support system
(raw materials procurement,
quality management and sale assisting).



Products

"Smile With Food" We offer security, relief and satisfaction.

We introduce a part of the products handled.

import

Delicatessen · Confectionery · Beans
Nuts & Dried Fruits
Cooked Cold Meals
Agricultural and Fishery Products

export

Agricultural and Fishery Products
Confectionery · Beverage

Efforts

Raw Materials Procurement

Quality Management

About Us

Company Profile
Corporate History
Company philosophy
Greeting

Business Contents

Food Import
Food Export
Planning and Development
Commissioned Manufacturing

Products

Imported Food

Delicatessen·Confectionery·Beans
Nuts & Dried Fruits
Cooked Cold Meals
Agricultural and Fishery Products

Exported Food

Agricultural and Fishery Products
Confectionery/Beverage

Efforts

Raw Materials Procurement
Quality Management

New Topics

archive

Company Profile

Company Name	AN ENTERPRISE CO., LTD.
Location	2-16-4 Konan Minato-ku, Tokyo 108-0075 Shinagawa Grand Central Tower 3rd Floor TEL 03-6712-9188 FAX 03-6712-9588
Establishment	25 March, 2003
Capital	30 million yen
Representative	An Iwai
Our Bank	Tokyo Mitsubishi UFJ Bank Sumitomo Mitsui Banking Corporation Resona Bank Bank of China
Business Discription	Import & export of food products and planning, development, product manufacture, domestic and overseas sales etc.

access map



How to get to our office from Central Ticket Gate of Shinagawa station (Required time: approximately five minutes)



At first, go to the Konan Exit (East Exit) of Shinagawa Station.



Go straight ahead through the way to the Konan Exit (East Exit) of Shinagawa Station.



Advance for a while, there is a signboard of "the metropolitan bus platform guidance"



Turn to the right near the area of the signboard.



Advance for a while.



Turn to the right at a guide signboard of "Shinagawa Grand Central Tower". Another mark is a signboard of "CAFE de CRIE".



Reach the "Shinagawa Grand Central Tower".



About Us

Company Profile
Corporate History
Company philosophy
Greeting

Business Contents

Food Import
Food Export
Planning and Development
Commissioned Manufacturing

Products

Imported Food
Delicatessen-Confectionery-Beans
Nuts & Dried Fruits
Cooked Cold Meals
Agricultural and Fishery Products
Exported Food
Agricultural and Fishery Products
Confectionery/Beverage

Efforts

Raw Materials Procurement
Quality Management

[New Topics](#)

[archive](#)

Corporate History

2017

Established third factory for manufacturing western confectionery in Zhejiang Province
Established a local corporation in Hangzhou city to extend confectionery business in China

2016

Group sales reached 7 billion yen (Japanese domestic sales 3.6 billion yen)

2015

Established sales office in Chengdu for Chinese domestic Market
Started a mail order business of Western confectionery in China

2014

Started planning and selling to China's luxury super market and Japanese-affiliated retail chain stores

2013

Started China bonded processing, selling in Japan and trilogy processing trade of nuts and dried fruits from the US and aquatic raw material from Japan.



2012

Started selling Japanese confectionery, ingredients, drinks, agricultural products to Hong Kong, Taiwan, USA, etc.
Group sales reached 6 billion yen (Japanese domestic sales 2.8 billion yen)

2011

Started selling European chocolate confectionery to China

2010

Started selling nuts and dried fruits from the US to China

2009

Developed sweets business in China

2008

Established second factory for manufacturing dried fruits in Zhejiang Province

2007

Started selling cooked cold meals such as processed pork, processed chicken, Japanese style daily dishes and Chinese yumcha
Established local office for overseas export support in Hangzhou city

2006

Started selling material confectionery such as chestnuts, sweet potatoes, rice confectionery and bean confections
Started selling the plum product series

2005

Started selling fishery items such as frozen, dried and processed seafood & processed squid products





2004

Established the first factory for agricultural processing in Zhejiang Province

2003

Established AN ENTERPRISE Co., Ltd. in Japan
Started selling agricultural products such as frozen/dry/boiled/canned/fried

2002

Established as a Japanese office of Zhejiang Commercial Corporation

Company Philosophy

Challenging Creation Action Sincerity Effort
Enthusiasm Appreciation Humility

Sales planning

Understand needs,
Marketing, Suggestions,
Sales promotion/Support



Trial manufacture development

Source raw materials/producers,
Product differentiation, Concept creation,
Suggestions



Factory selection

Manage procurement and
manufacturing at domestic and
overseas partners, Trust relationship
with managers, Manufacturing management
by Japanese quality



Commissioned manufacturing

Securing stable production,
Improving production capacity,
Timely production plan,
Improving production quality, Optimizing costs



Raw materials procurement

Networks that procures materials from all
over the world, Supply and
demand/Market information, Producing
district development, Processing trade,
Producing district investment



Quality management

Unique purchasing standards,
Employee training, Site management,
Integrated management systems for quality
improvement



Logistics management

Import and export procedures,
Shipping/Delivery arrangement



Sales support

Correspondence with speed,
Reliable support



Greeting

Welcome.

Thank you very much for accessing the website of AN ENTERPRISE CO., LTD.

Initially, we started as a Japanese office of Zhejiang Commercial Corporation in China and have reached the present. All employees appreciate everyone's support because we could be involved in "food" by the trading company specializing in importing Chinese foods, planning development, commissioned manufacturing and export sales and expand widely to countries other than China.

As unstable factors relating to food supply and demand in the world emerge and the environment surrounding the food industry changes dramatically, not only "food safety and security" but also our roles are becoming more diverse. We will continue to strive to grasp customer needs and further expand and strengthen the reliable network that we have cultivated over the years, aiming to build an optimal integrated system from raw material procurement, development manufacturing, quality management to sales support.

Although we are still fledgling, we would like to try our best to provide safety, security and satisfaction and to challenge new fields further. In order to make more opportunities to serve even a little more fruitful, we will make further efforts from all our employees. We sincerely hope that further guidance and support will be given.

AN ENTERPRISE CO., LTD.

CEO An Iwai

Food Import

Valuable materials from world production areas,
delicious products from factories of the world with solid and reliable technology...

Food Import



We deliver delicious ingredients from around the world with high quality at the best cost by importing and delivering.

We handle a lot of raw materials, processed goods, products from China, Asia, North America, and Europe. We provide consistent service from pioneering and procurement of ingredients, manufacturing management with Japanese quality to efficient import&logistics operations. In addition, we have utilized our network with many producers and cooperating manufacturers, including our own factory, to manufacture private brands and develop and import proprietary products.

Food Export

Taking advantage of China and other networks,
we bring valuable Japanese products to China, Asian and the worlds overseas economies...



We have strengthened the export business from the desire to have the world know about the good products of Japan. We will deliver Japanese ingredients, sweets, souvenirs and food culture to the world that are as of yet unknown to the world.

Our supplier partners are becoming strong buyers in many countries. Exporting by ourselves alone has high risks and costs, so we can enhance our feasibility with our supplier partners more reliably, which is our great strength.

The reversal phenomenon of development and import of Japanese goods is occurring for Asian countries that are rapidly enriching. We are focusing not only on overseas market research and export business but also on product development.

We will continue to strengthen our business so that the Japanese food boom will be more exciting for the Tokyo Olympic Games.

Project Development

Based on the trust and achievements built with domestic and foreign partners,
we propose and develop new products...



Consumer needs in Japan are diversifying day by day, individualized and attractive products are required, and the change is very fast paced. In addition, commitment to foodstuffs requires appeal to producers, and differentiated concept creation enhances product capabilities. We will work together with our customers to develop proposals for products that are attractive to consumers by engaging in product development and development from domestic and overseas sources.

Commissioned Manufacturing

Supporting domestic and overseas commissioned manufacturing
that can procure better products safely and at lower cost...



We have made efforts to realize Japanese quality manufacturing management at overseas factories and at many producers and cooperating manufacturers.

We will provide our own consignment service that meets customer's needs and standards in the most suitable domestic and overseas locations and increases added value.

Constructing raw material procurement networks, including raw material procurement and bonded processing in trilateral trade, which will affect the world food prices in the future, is our strength.

We will individually support from raw material research, local support such as quality checks and supply system checks to logistics work according to your request.

Raw Material Procurement

In an era when the instability factor concerning food supply and demand in the world becomes obvious and business risks due to sudden fluctuations in raw material price and exchange rates are increasing more and more, the procurement power of raw materials becomes a very important key.

In raw material procurement, we place great importance on making a strong network with excellent suppliers and quickly obtaining market information such as production volume and supply and demand trends. For that reason, we not only frequently visit the production areas, but also have made our staff residents and invested in production areas and factories aggressively.



Quality Management

In selection of suppliers, we have established our own purchasing standards such as traceability, voluntary inspection systems, and international certifications including ISO and HACCP. In order to realize food safety and security, we have a consistently strict management system from raw material growth to harvesting, and in all other processes such as storage, logistics and inspection.

In quality management, we carefully consider the attitude of management, to understand Japanese quality and make better things together, and the day-to-day efforts of the site. To that end, we go to the manufacturing site, constantly talking with management, educating staff and improving the quality of the site.



Products

It is our biggest praying to send more safety,
more clam and more reasonable ingredients.

We utilize a network of my company's factory and reliable factory with the partnership, and we offer customers the best product.

We constantly strive to offer customers higher grade safety, for instance, making minute arrangements in Japan, going to confirm a factory in China, etc.

There are a lot of products which are not listed. If there is anything we can help you with, please do not hesitate to contact us.

Imported Food

Delicatessen · Confectionery · Beans



Nuts & Dried Fruits



Cooked Cold Meals



Agricultural and Fishery Products



Exported Food

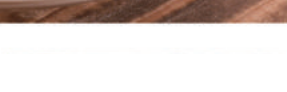
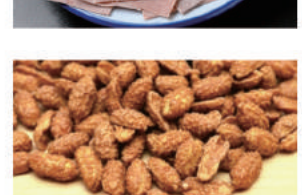
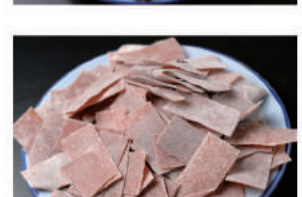
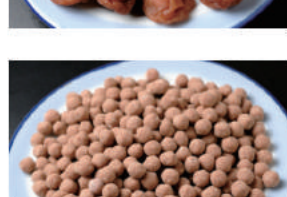
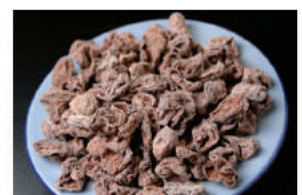
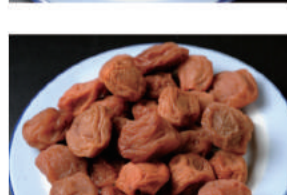
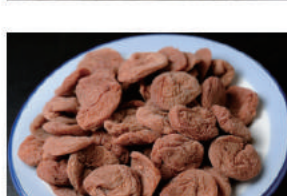
Confectionery · Beverage



Agricultural and Fishery Products



Delicatessen · Confectionery · Beans





Nuts&Dried fruits



Cooked cold meals





Agricultural and seafood products



Agricultural and seafood products



Confectionery·Beverage



Privacy Policy

AN ENTERPRISE CO., LTD (hereinafter referred to as the "Company") promotes the protection of personal information by establishing a privacy policy as follows, building a structure of the privacy protection, and ensuring that all employees recognizes and strives for the importance of personal information protection.

Management of Personal Information

In order to maintain the accurate and latest state of the personal information of customers and to prevent unauthorized access to, or the loss, destruction, modification, and leaking of personal information, this Company carries out necessary measures such as a maintaining security system, maintaining a management system, and ensuring employee education, carries out safety measures, and strictly manages personal information.

Personal Information of the Purpose of Use

Personal information entrusted by customers will be used in e-mails and attached materials for contact from the Company, business guidance, and answers to inquiries.

Prohibition of Disclosure and Provision of Personal Information to a Third Party

This Company appropriately manages personal information entrusted by customers and does not disclose personal information to third parties except in any of the following cases.

1. When a customer has given their agreement
2. When this Company discloses to the contractors in order to perform services that the customer wishes for
3. When disclosure is necessary under laws and regulations

Safety Measures for Personal Information

This Company takes all security measures to ensure the accuracy and safety of personal information.

Inquiry of Personal Information

In the case where a customer wishes for their personal information to be referenced, modified, or deleted, support shall be provided upon identity verification.

Compliance and review of laws, regulations, and standards

This Company complies with the laws, regulations, and any other standards of Japan that are applied in relation to the personal information it retains, and strives to review and improve the contents of this policy when appropriate.

Sitemap

HOME	About Us	Business Contents	Products	Efforts	Privacy Policy
	Company Profile	Food Import	Imported Food	Raw Materials	Sitemap
	Corporate History	Food Export	Delicatessen-Confectionery-Beans	Procurement	Inquiries
	Company philosophy	Planning and Development	Nuts & Dried Fruits	Quality Management	
	Greeting	Commissioned Manufacturing	Cooked Cold Meals		
			Agricultural and Fishery Products		
			Exported Food		
			Agricultural and Fishery Products		
			Confectionery-Beverage		



HOME > Inquiries

Inquiries

First Name *

Family Name *

Company Name

Address

Telephone Number

E-mail Address *

Message

Confirmation



About Us

Business Contents

Products

Efforts

Company Profile
Corporate History
Company philosophy
Greeting

Food Import
Food Export
Planning and Development
Commissioned Manufacturing

Imported Food
Delicatessen-ConfectioneryBeans
Nuts & Dried Fruits
Cooked Cold Meals
Agricultural and Fishery Products
Exported Food
Agricultural and Fishery Products
Confectionery/Beverage

Raw Materials Procurement
Quality Management

New Topics

archive